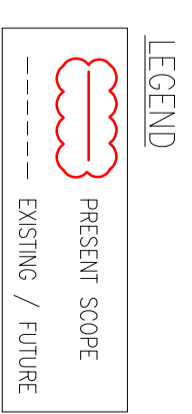
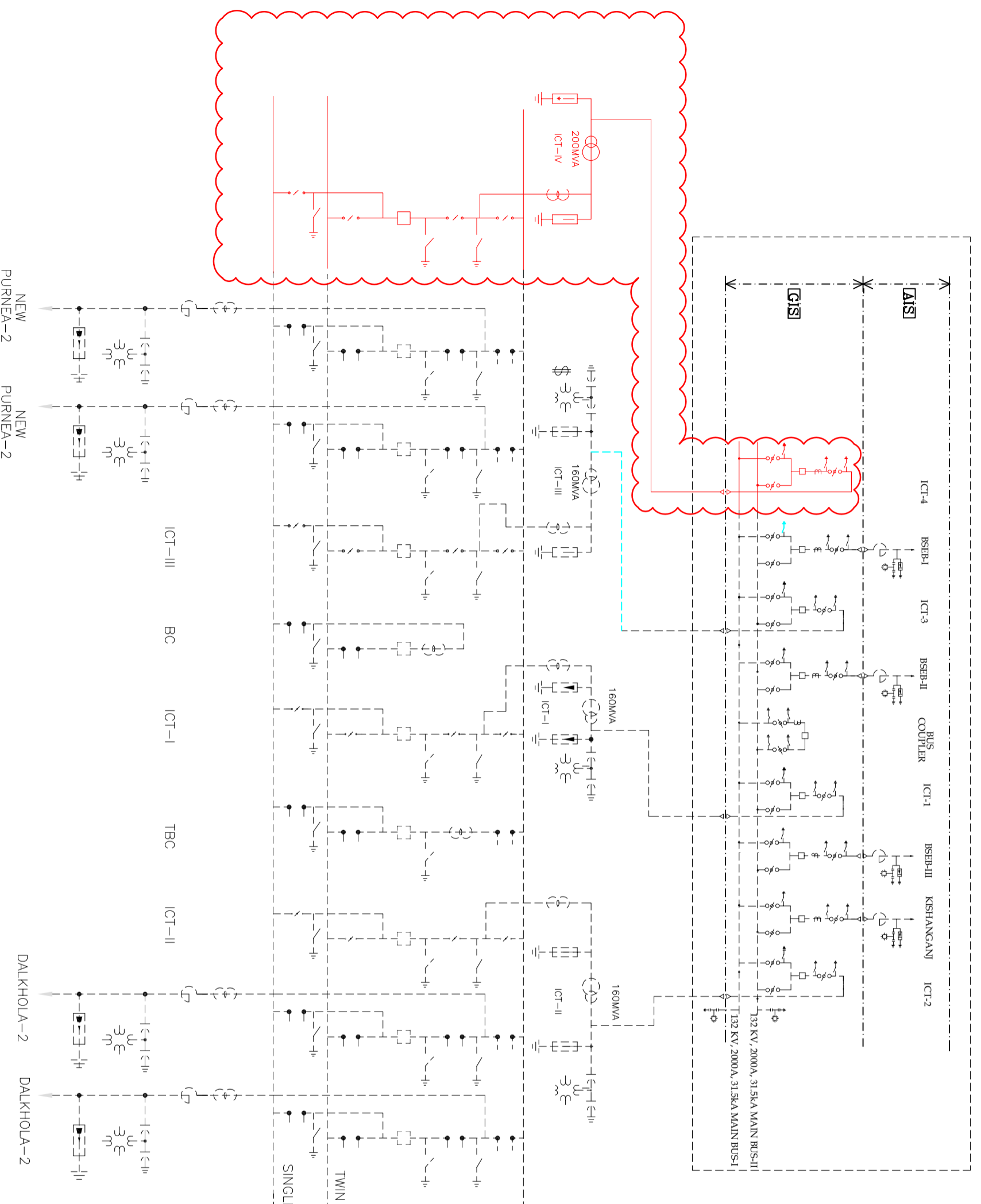


Sl. NO.	ITEM DESCRIPTION	SYMBOL
1	200MVA, 220/132KV, 3-PH TRANSFORMER	
2	ISOLATOR WITH 2 EARTH SWITCH (DBR) (3-ph), 1600A, 50KA, 1SEC	
3	ISOLATOR WITH 1 EARTH SWITCH (DBR) (3-ph), 1600A, 50KA, 1SEC	
4	ISOLATOR WITHOUT EARTH SWITCH, DBR(TANDEM) (3-ph), 1600A, 50KA, 1SEC	
5	CURRENT TRANSFORMER(1-ph) 1600A, 120% extended current rating, 50KA, 1SEC.	
6	245 KV/1600 A, 50KA, CIRCUIT BREAKER (3PH)	
7	216KV SURGE ARRESTOR (1-PH)	
BILL OF QUANTITY - 132KV		
1	146KV SF6 to AIR BUSHING (3-PH)	
2	120KV SURGE ARRESTER (1-PH)	



TWIN ACSR MOOSE
220 KV,40KA
TRANS BUS

TWIN ACSR MOOSE
220 KV,40KA
MAIN BUS-II

SINGLE ACSR MOOSE
220 KV,40KA
MAIN BUS-I

BUS CVT

POWER GRID CORPORATION OF INDIA LIMITED
(A Government of India Enterprise)

पुनर्विद्युत
POWERGRID

PROJECT : SUBSTATION PACKAGE SS157 UNDER ERES-52 SCHEME

SUBSTATION: 220/132 KV PURNEA(EXTN.) S/S

TITLE : TENDER SINGLE LINE DIAGRAM DRAWING

DATE	DRAWN BY	DRAWING NO.	REV.
MAY 2026	C/ENGG/PURNEA/ERES-52/STD		00

NEW PURNEA-2
NEW PURNEA-2

DALKHOLA-2
DALKHOLA-2